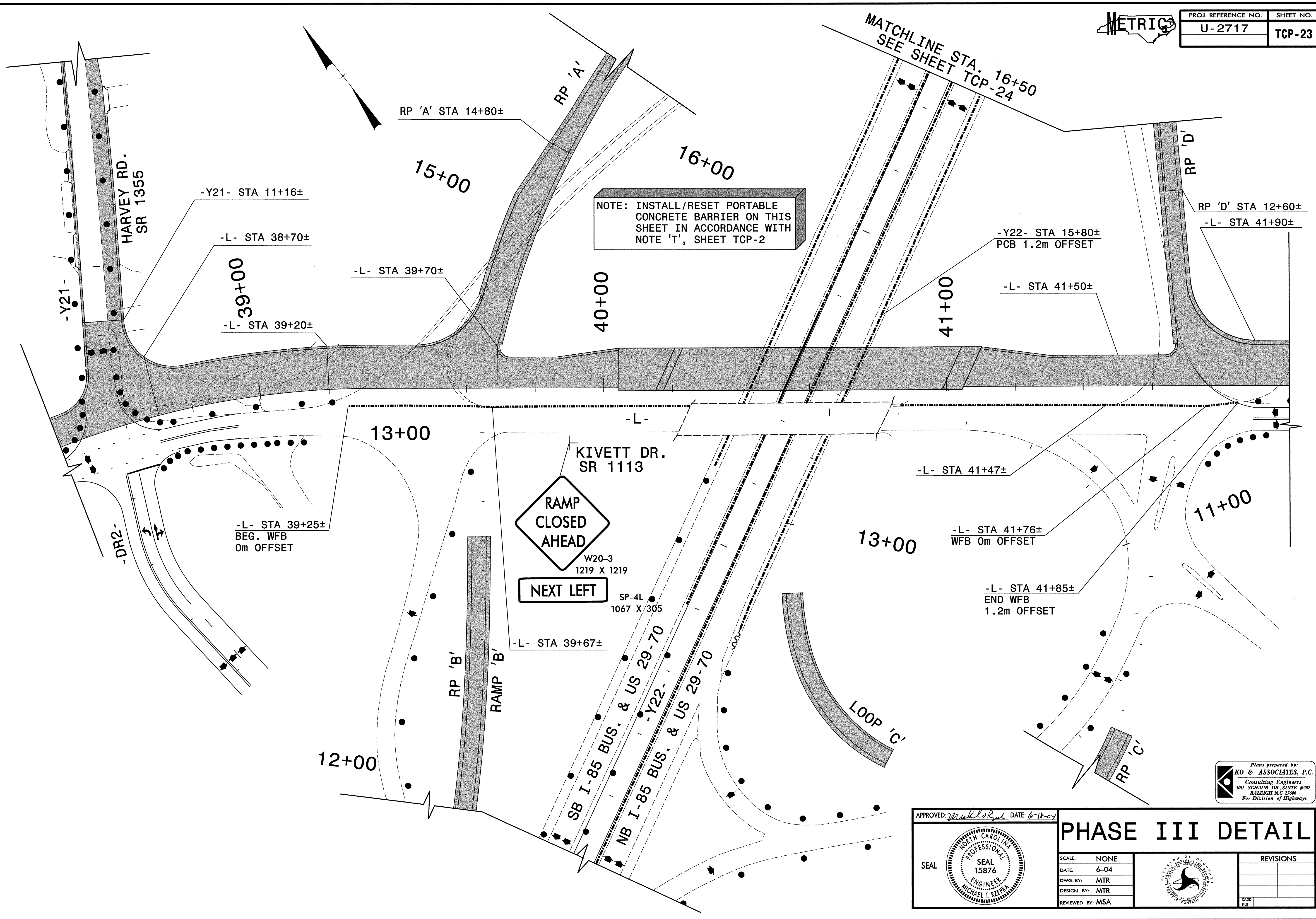




PROJ. REFERENCE NO.	SHEET NO.
U-2717	TCP-23



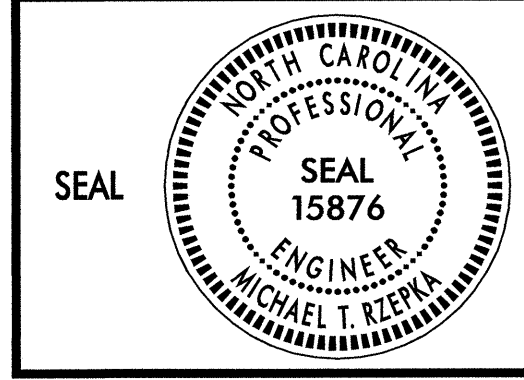
NOTE: INSTALL/RESET PORTABLE CONCRETE BARRIER ON THIS SHEET IN ACCORDANCE WITH NOTE 'T', SHEET TCP-2

RAMP CLOSED AHEAD
 W20-3
 1219 X 1219
NEXT LEFT

-L- STA 39+67±

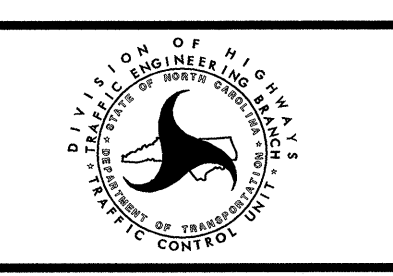
Plans prepared by:
KO & ASSOCIATES, P.C.
 Consulting Engineers
 101 SCHAUB DR., SUITE #202
 RALEIGH, N.C. 27606
 For Division of Highways

APPROVED: *M. R. R.* DATE: 6-18-07



PHASE III DETAIL

SCALE: NONE
 DATE: 6-04
 DWG. BY: MTR
 DESIGN BY: MTR
 REVIEWED BY: MSA



REVISIONS	

I:\Traffic\U-2717\002\plans\p3\howard.dgn
 06/02/2004 11:21:51 AM