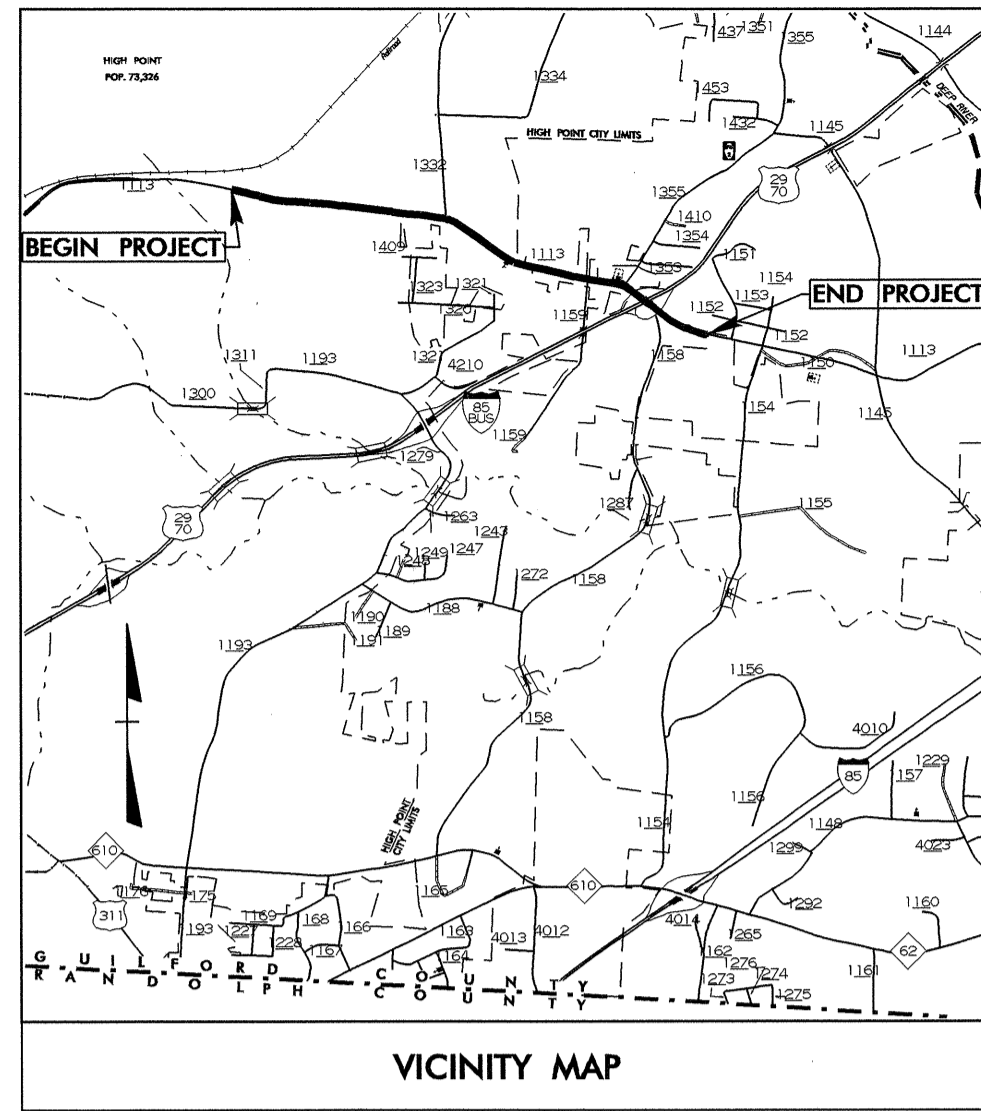


09/09/09

PROJECT: C201009 TIP: U-2717

See Sheet 1-A For Index of Sheets



STATE OF NORTH CAROLINA
DIVISION OF HIGHWAYS

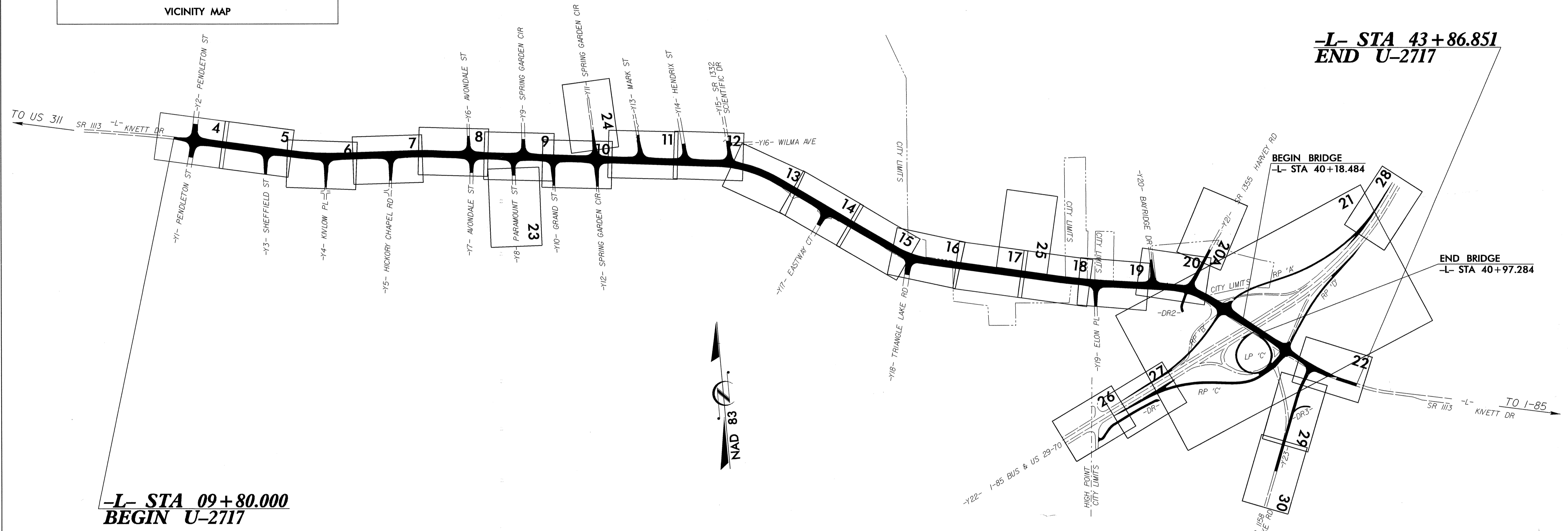
GUILFORD COUNTY

LOCATION: HIGH POINT - SR 1113(KIVETT DRIVE) FROM
PENDLETON ST. TO US 29-70, I-85 BUS

TYPE OF WORK: GRADING, DRAINAGE, PAVING, SIGNALS, SIDEWALK
AND STRUCTURES.

STATE	STATE PROJECT REFERENCE NO.	SHEET NO.	TOTAL SHEETS
N.C.	U-2717	1	
STATE PROJ. NO.	F. A. PROJ. NO.	DESCRIPTION	
34850.1.1	STP-1113(2)	PE	
34850.2.2	STP-1113(2)	ROW, UTILITIES	
34850.3.2	STP-1113(4)	CONSTRUCTION	

ALL DIMENSIONS IN
THESE PLANS ARE IN METERS
AND/OR MILLIMETERS
UNLESS OTHERWISE SHOWN



THIS IS A PARTIAL CONTROLLED ACCESS PROJECT WITH ACCESS
BEING LIMITED TO INTERCHANGE.

GRAPHIC SCALES PLANS PROFILE (HORIZONTAL) PROFILE (VERTICAL)	DESIGN DATA ADT 2004 = 9,900-18,627 ADT 2025 = 19,350-33,423 DHV = 10 % D = 55 % T = 7 % * V = 80 km/h * TTST 3 % DUAL 4 %	PROJECT LENGTH LENGTH ROADWAY F.A. PROJECT STP-1113(2) = 3.328 KM LENGTH STRUCTURE F.A. PROJECT STP-1113(2) = 0.079 KM TOTAL LENGTH STATE PROJECT U-271 = 3.407 KM	Prepared In the Office of: DIVISION OF HIGHWAYS 1000 Birch Ridge Dr., Raleigh, NC 27610	ROADWAY DESIGN ENGINEER SIGNATURE: <i>J.S. Goodnight</i> HYDRAULICS ENGINEER SIGNATURE: <i>S.D. Kendall</i>	DIVISION OF HIGHWAYS STATE OF NORTH CAROLINA STATE DESIGN ENGINEER DEPARTMENT OF TRANSPORTATION FEDERAL HIGHWAY ADMINISTRATION APPROVED DIVISION ADMINISTRATOR
			2002 STANDARD SPECIFICATIONS RIGHT OF WAY DATE: AUGUST 12, 2002 LETTING DATE: OCTOBER 19, 2004		

23-AUG-2004 14:45
RW:BWEDKING
RD:196538