

	PROJECT REFERENCE NO.	SHEET NO.
	U-2717	4
R/W SHEET NO.		
ROADWAY DESIGN ENGINEER	HYDRAULICS ENGINEER	
CONST. REV.		
R/W REV.		

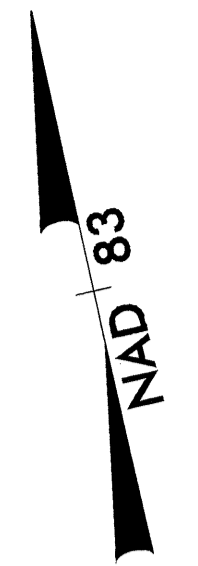
FOR -L- PROFILE SEE SHEET 31  
 FOR -Y1- PROFILE SEE SHEET 41  
 FOR -Y2- PROFILE SEE SHEET 41

SIDEWALK  
 PAINT STRIPPING

16.509 33.425	15.701 31.184
-L- KIVETT DR.	-L- KIVETT DR.
2118 3932	1310 1691
2004 ADT 2025 ADT	-Y1- PENDLETON ST.
3428 5623	

TRUSTEES OF HIGH POINT COLLEGE, INC.  
 DB 2220 PG 781

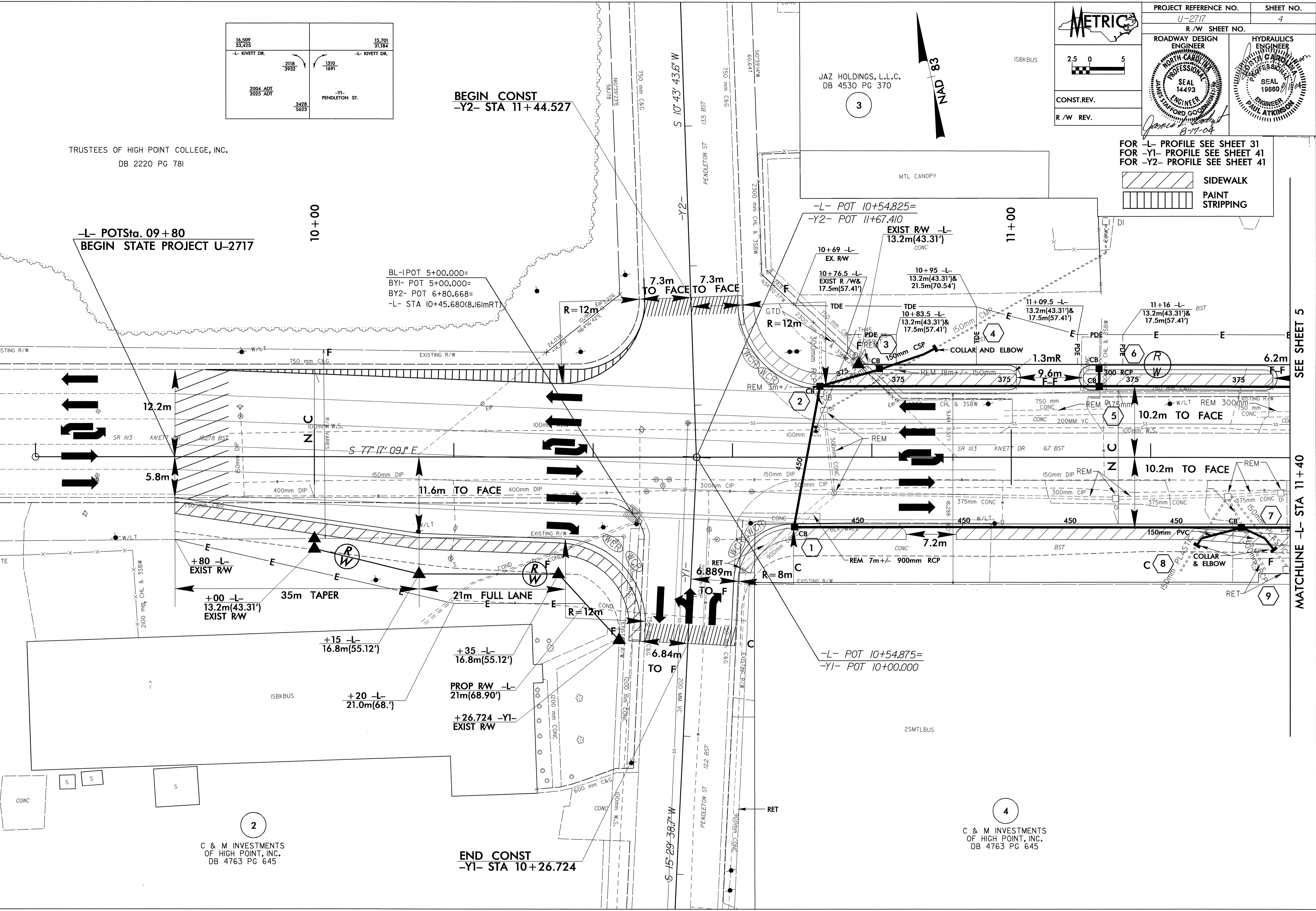
JAZ HOLDINGS, L.L.C.  
 DB 4530 PG 370



-L- POT Sta. 09+80  
 BEGIN STATE PROJECT U-2717

BEGIN CONST  
 -Y2- STA 11+44.527

BL-IPOT 5+00.000=  
 BY1- POT 5+00.000=  
 BY2- POT 6+80.668=  
 -L- STA 10+45.680(8.161mRT)



REVISIONS

SEE SHEET 5

MATCHLINE -L- STA 11+40

2  
 C & M INVESTMENTS  
 OF HIGH POINT, INC.  
 DB 4763 PG 645

END CONST  
 -Y1- STA 10+26.724

4  
 C & M INVESTMENTS  
 OF HIGH POINT, INC.  
 DB 4763 PG 645

1-AUG-2004 14:29  
 B:\52528\196538