

8/17/2004
RD-196538
196538 Monday August 09 2004 s17fBWedeking rd-04oc34

CARROLL INVESTMENT PROPERTIES, INC.
DB 5036 PG 606
DB 5066 PG 1507

89

BL-15
PINC 27+38.42E
-L- STA 32+76.956(4.999m LT)

TH14
L 32+68.66
4.6226LT

+80 -L-
17m(55.77')

33+00

+00 -L-
18m(59.06')

NAD 83

AREA UNDER CONSTRUCTION

BROADSTONE VILLAGE APARTMENTS, LLC.
DB 5291 PG 893

90

AREA UNDER CONSTRUCTION

+00 -L-
18m(59.06')

34+00

FOR -L- PROFILE SEE SHEET 37

SOIL SIDEWALK

METRIC
2.5 0 5
CONST.REV.
R/W REV.

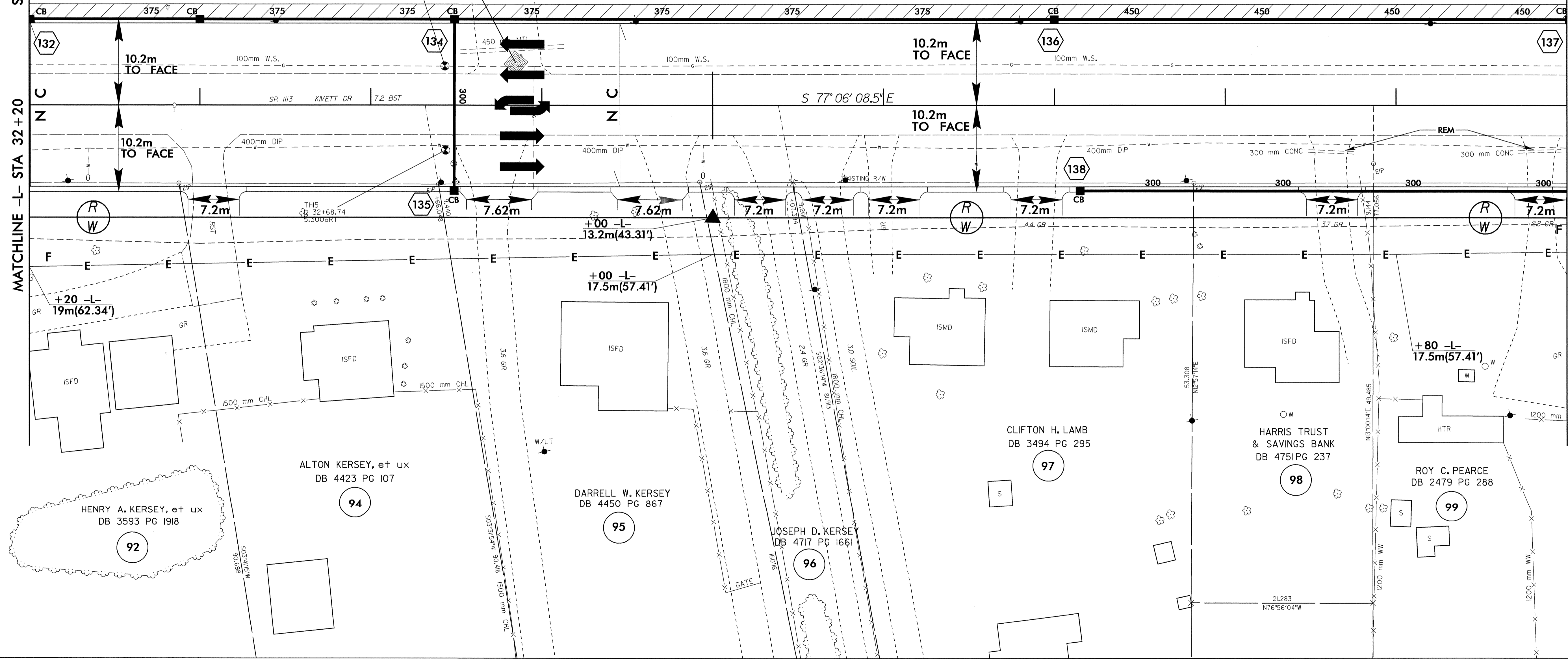
PROJECT REFERENCE NO. U-2717
SHEET NO. 17
R/W SHEET NO.
ROADWAY DESIGN PROFESSIONAL SEAL 14493
HYDRAULICS ENGINEER SEAL 19860
FOR -L- PROFILE SEE SHEET 37

SEE SHEET 16

SEE SHEET 18

MATCHLINE -L- STA 32+20

MATCHLINE -L- STA 34+00



REVISIONS

HENRY A. KERSEY, et ux
DB 3593 PG 1918

ALTON KERSEY, et ux
DB 4423 PG 107

DARRELL W. KERSEY
DB 4450 PG 867

JOSEPH D. KERSEY
DB 4717 PG 1661

CLIFTON H. LAMB
DB 3494 PG 295

HARRIS TRUST
& SAVINGS BANK
DB 4751 PG 237

ROY C. PEARCE
DB 2479 PG 288

92

94

95

96

97

98

99

R
W

R
W

R
W

132

134

136

137

135

138