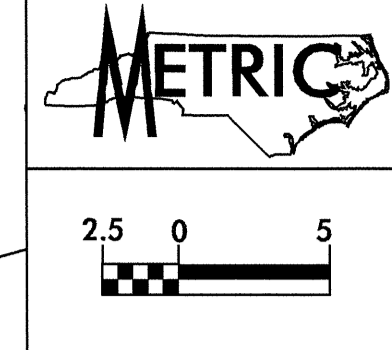
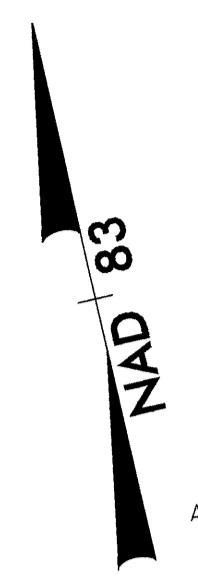


8/17/04

AREA UNDER CONSTRUCTION

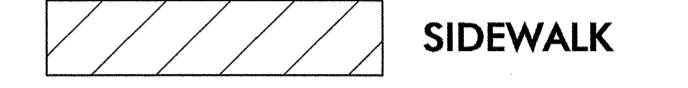
-L-

$PI\ Sta\ 35+70.454$   
 $\Delta = 4^\circ 52' 36.9" (LT)$   
 $L = 167.25$   
 $R = 80.911$   
 $SE = 0.2$   
 $INC = 13$

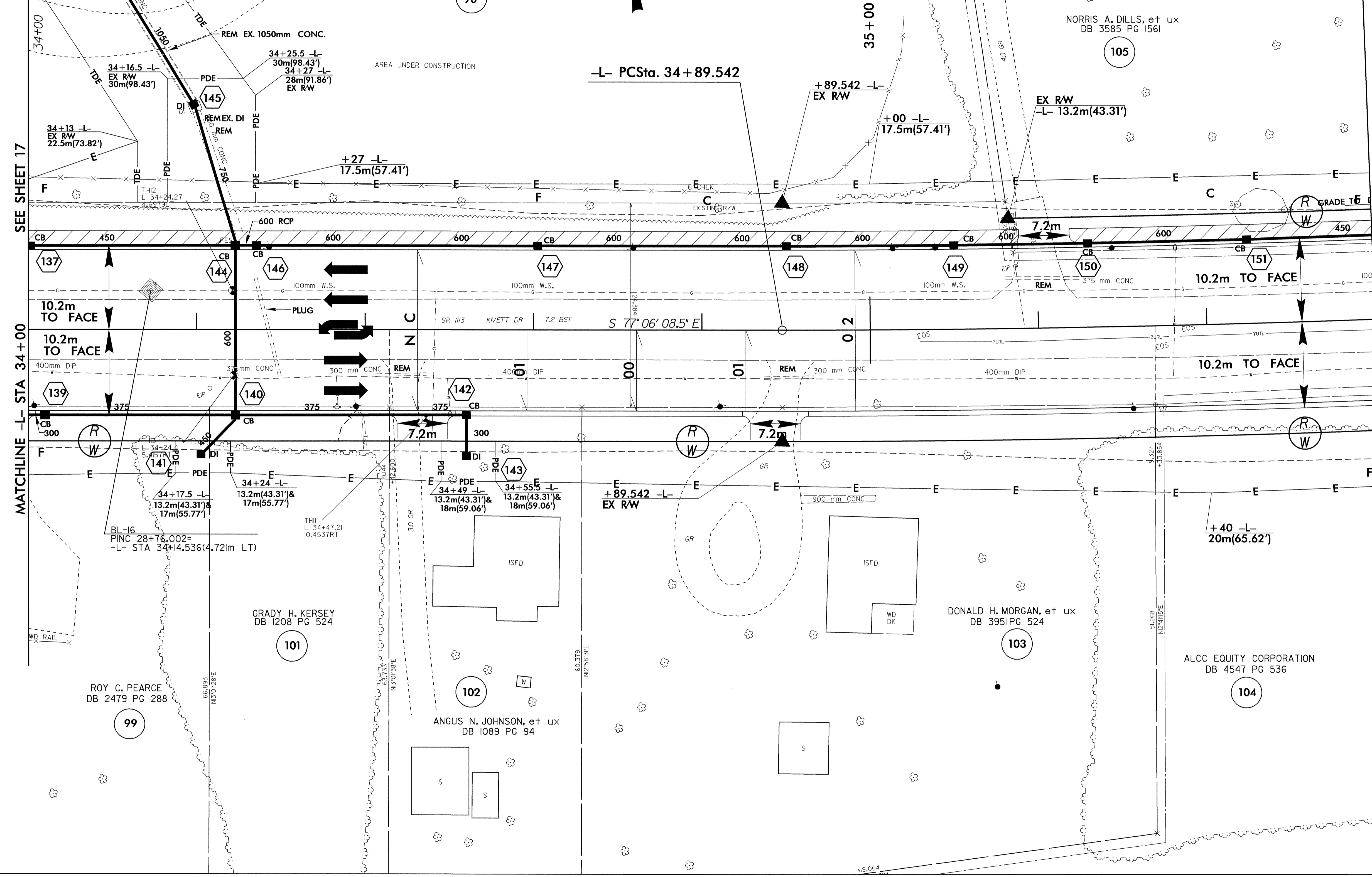


|   |  |
|---|--|
| PROJECT REFERENCE NO.<br>U-2717   | SHEET NO.<br>18  |
| R/W SHEET NO.   |  |
| ROADWAY DESIGN ENGINEER<br>NORTH CAROLINA PROFESSIONAL ENGINEER<br>SEAL 14493<br>JAMES F. FORD, BOON HIGHT, JR. | HYDRAULICS ENGINEER<br>NORTH CAROLINA PROFESSIONAL ENGINEER<br>SEAL 19660<br>PAUL ATKINSON |
| CONST. REV.   |  |
| R/W REV.  |  |

FOR -L- PROFILE SEE SHEET 37 AND 38



MATCHLINE SEE SHEET 25



SEE SHEET 17

SEE SHEET 19

MATCHLINE -L- STA 34+00

MATCHLINE -L- STA 35+60

REVISIONS

08-AUG-2004 15:51  
 86%  
 B:\proj\18Wedeking\RD\185538