

8/17/04  
08-AUG-2004 15:49  
85-PC-10+30-21-RT RD-196538  
BWedeking

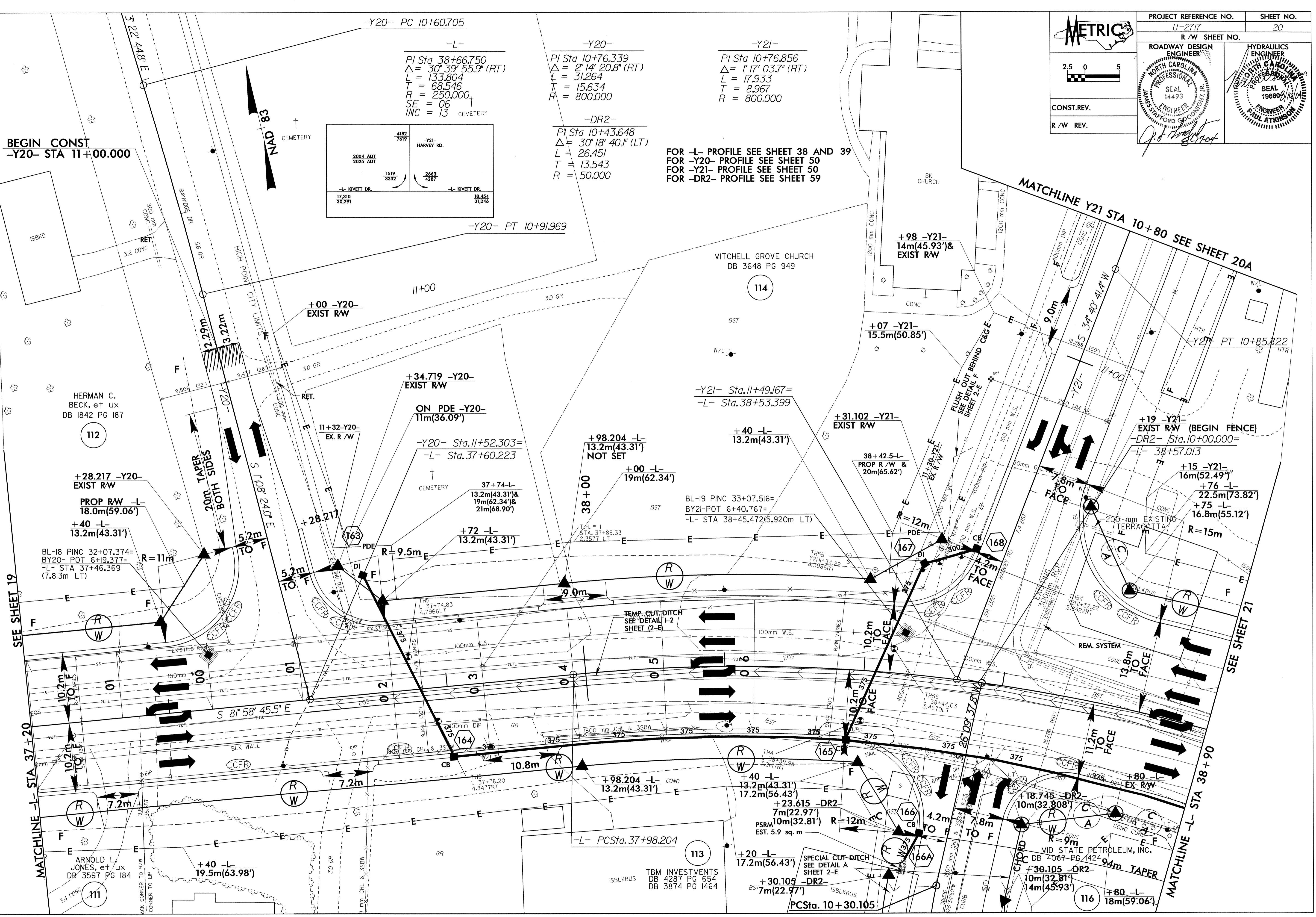
 2.5 0 5 CONST. REV. R/W REV.	PROJECT REFERENCE NO. U-2717	SHEET NO. 20
	R/W SHEET NO. ROADWAY DESIGN ENGINEER NORTH CAROLINA PROFESSIONAL SEAL 14493 STAFFORD S. DUNNIGHT JR.	HYDRAULICS ENGINEER NORTH CAROLINA PROFESSIONAL SEAL 19660 PAUL ATKINSON

*J. B. Dunnett*

BEGIN CONST  
-Y20- STA 11+00.000

<b>-L-</b> PI Sta 38+66.750 $\Delta = 30^\circ 39' 55.9''$ (RT) L = 133.804 T = 68.546 R = 250.000 SE = 06 INC = 13 CEMETERY	<b>-Y20-</b> PI Sta 10+76.339 $\Delta = 2^\circ 14' 20.8''$ (RT) L = 31.264 T = 15.634 R = 800.000	<b>-Y21-</b> PI Sta 10+76.856 $\Delta = 1^\circ 17' 03.7''$ (RT) L = 17.933 T = 8.967 R = 800.000			
<table border="1"><tr><td>4182 7619</td><td>1919 3332</td><td>2663 4287</td></tr></table>	4182 7619	1919 3332	2663 4287	<b>-DR2-</b> PI Sta 10+43.648 $\Delta = 30^\circ 18' 40.1''$ (LT) L = 26.451 T = 13.543 R = 50.000	
4182 7619	1919 3332	2663 4287			

FOR -L- PROFILE SEE SHEET 38 AND 39  
FOR -Y20- PROFILE SEE SHEET 50  
FOR -Y21- PROFILE SEE SHEET 50  
FOR -DR2- PROFILE SEE SHEET 59



SEE SHEET 19

MATCHLINE -L- STA 37+20

MATCHLINE SEE SHEET 21

SEE SHEET 21