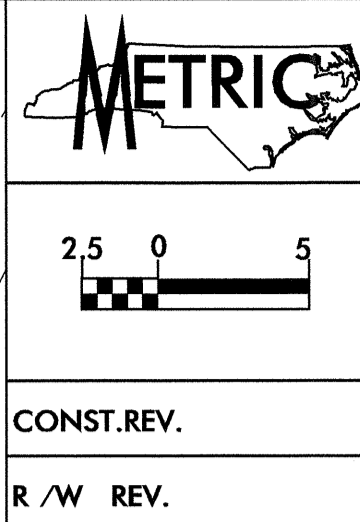
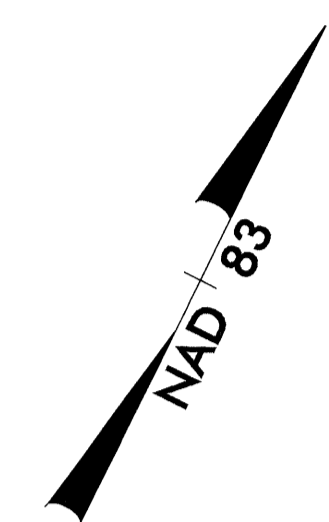


ALCC EQUITY CORPORATION
DB 4547 PG 536



PROJECT REFERENCE NO. U-2717	SHEET NO. 26
R/W SHEET NO.	
ROADWAY DESIGN ENGINEER SEAL 14493	HYDRAULICS ENGINEER SEAL 19860
CONST. REV.	
R/W REV.	



-Y22- POT 10+00.000

BEGIN CONST SBL
-Y22- STA 10+31.314

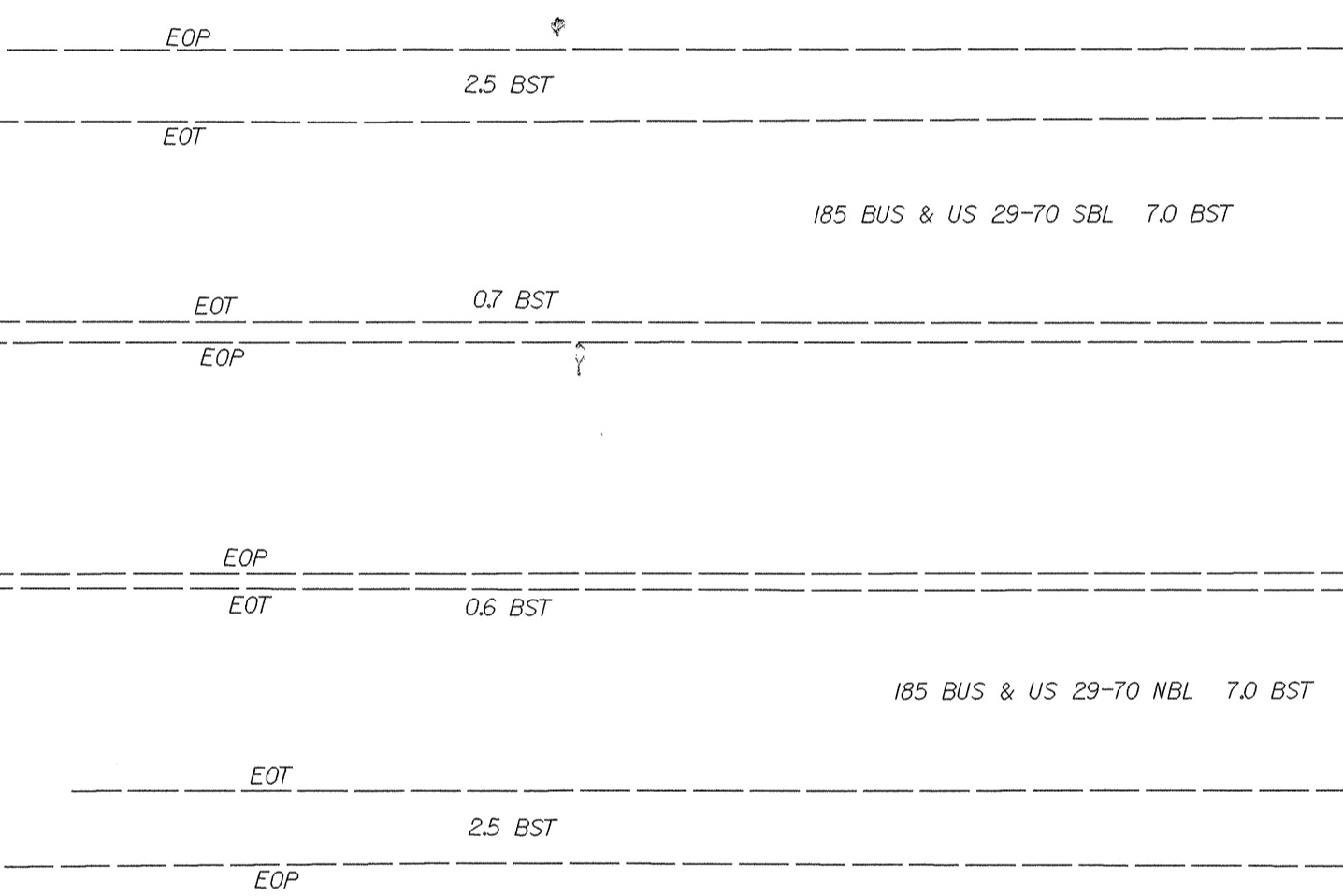
BEGIN FENCE
HIGH POINT CITY LIMITS
-Y22- STA +63

END FENCE
TIE TO EXISTING
-Y22- STA +94 ON RW

BY22-53 POT 14+60.941=
-Y22- STA 10+82.49(18.23mLT)
90m TAPER

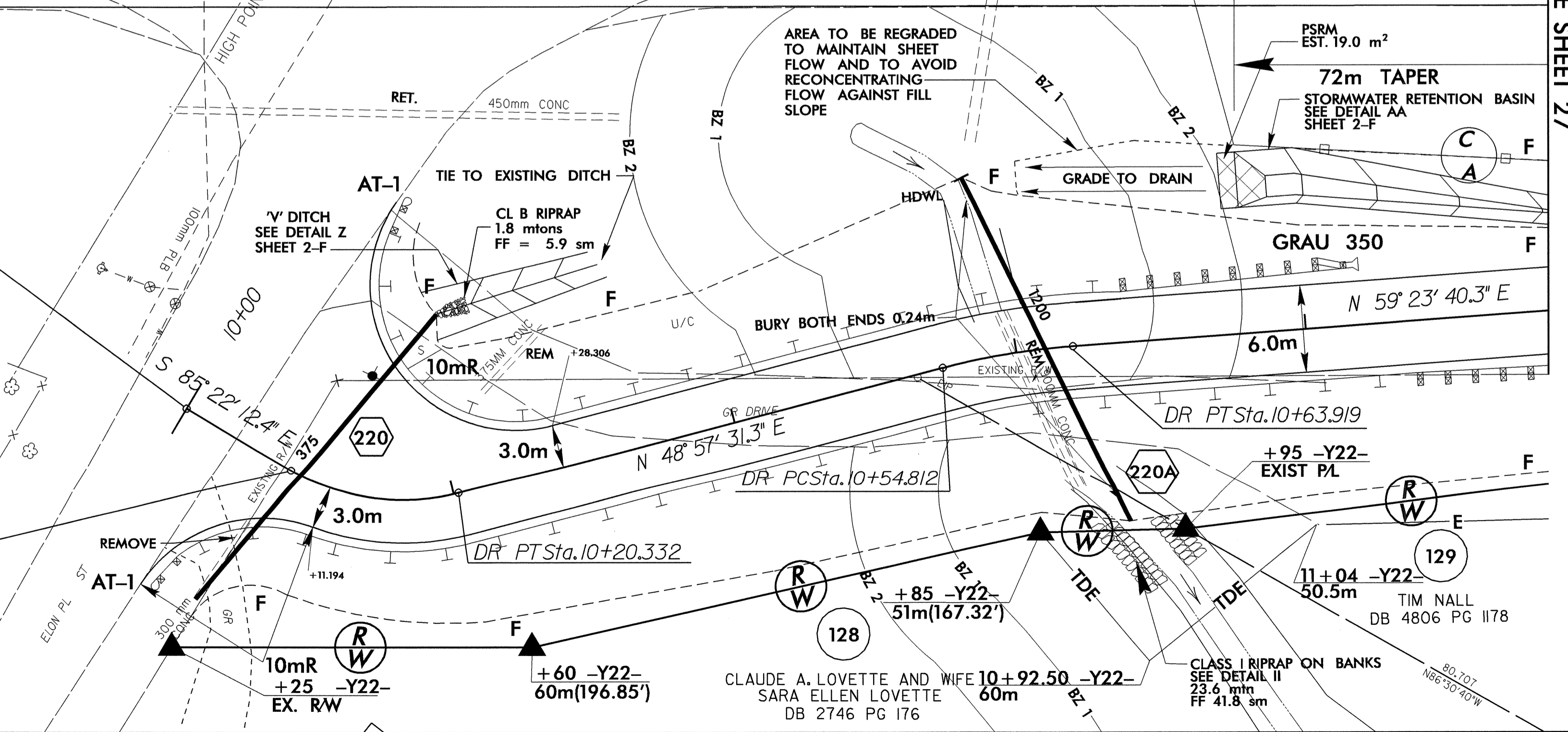
PAVEMENT REMOVAL FOR -DR- PROFILE SEE SHEET 59
FOR -Y22- PROFILE SEE SHEETS 60 TO 63

MATCHLINE -Y22- STA 11+20
SEE SHEET 27



-DR-
 PI Sta 10+14.692 PI Sta 10+59.378
 $\Delta = 45^\circ 40' 16.3''$ (LT) $\Delta = 10^\circ 26' 09.0''$ (RT)
 $L = 11.957$ $L = 9.107$
 $T = 6.316$ $T = 4.566$
 $R = 15.000$ $R = 50.000$

DR POT Sta. 10+00.000 =
 -Y22- POT Sta. 10+26.215(42.2852mRT)



REVISIONS

08-AUG-2004 15:47
B:\PROJECTS\RD0196538