

8/17/23

	PROJECT REFERENCE NO. U-2717	SHEET NO. 28
	R/W SHEET NO.	
2.5 0 5	ROADWAY DESIGN ENGINEER NORTH CAROLINA PROFESSIONAL SEAL 14493	HYDRAULICS ENGINEER NORTH CAROLINA PROFESSIONAL SEAL 19680
CONST. REV.	PAUL ATKINSON	
R/W REV.	2-1-2004	

FOR RAMP 'A' PROFILE SEE SHEETS 52 AND 53
FOR -Y22- PROFILE SEE SHEETS 60 TO 63

REVISIONS

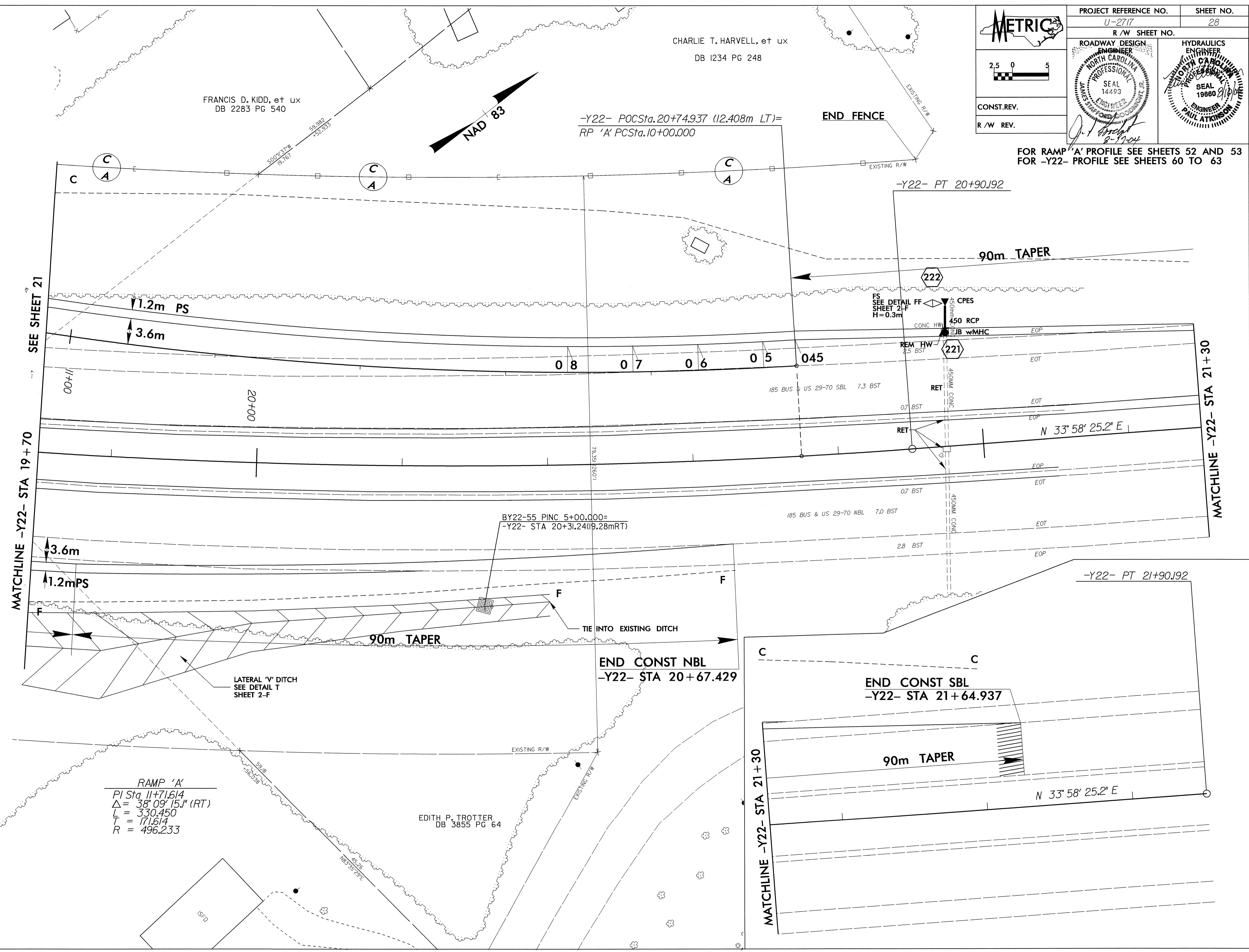
-Y22-
PI Sta 18+72.708
 $\Delta = 29^\circ 24' 28.5" (LT)$
L = 445.000
T = 227.517
R = 867.000

RAMP 'A'
PI Sta 11+71.614
 $\Delta = 38^\circ 09' 15.1" (RT)$
L = 330.450
T = 171.614
R = 496.233

EDITH P. TROTTER
DB 3855 PG 64

CHARLIE T. HARVELL, et ux
DB 1234 PG 248

FRANCIS D. KIDD, et ux
DB 2283 PG 540



08-AUG-2004 15:47
PLAN: 28 (1/2)
BY: J. H. W.