



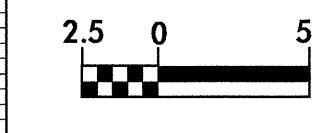
PROJECT REFERENCE NO. U-2717 SHEET NO. 55

ROADWAY DESIGN ENGINEER
NORTH CAROLINA PROFESSIONAL SEAL 14493

HYDRAULICS ENGINEER
NORTH CAROLINA PROFESSIONAL SEAL 19860

CONST. REV.
R /W REV.

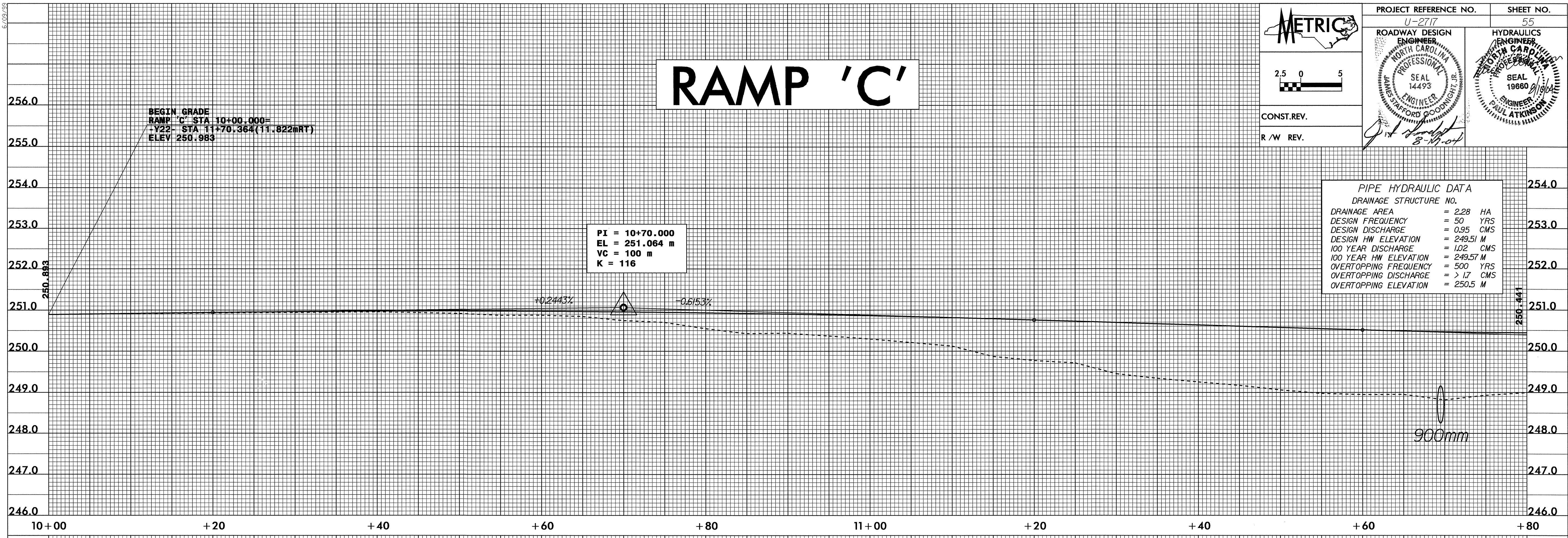
8-17-04



RAMP 'C'

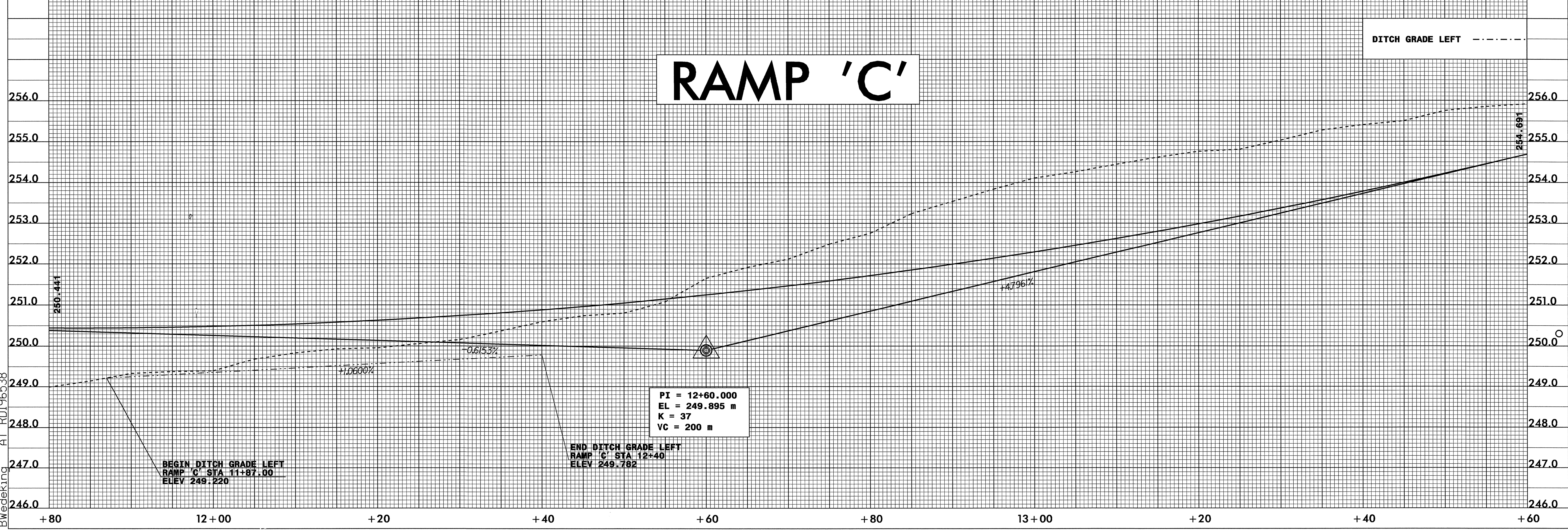
PIPE HYDRAULIC DATA

DRAINAGE STRUCTURE NO.	
DRAINAGE AREA	= 2.28 HA
DESIGN FREQUENCY	= 50 YRS
DESIGN DISCHARGE	= 0.95 CMS
DESIGN HW ELEVATION	= 249.51 M
100 YEAR DISCHARGE	= 1.02 CMS
100 YEAR HW ELEVATION	= 249.57 M
OVERTOPPING FREQUENCY	= 500 YRS
OVERTOPPING DISCHARGE	= > 1.7 CMS
OVERTOPPING ELEVATION	= 250.5 M



RAMP 'C'

DITCH GRADE LEFT



03-AUG-2004_09:02
 B:\proj\2717\AT\RD196538
 BWedeking