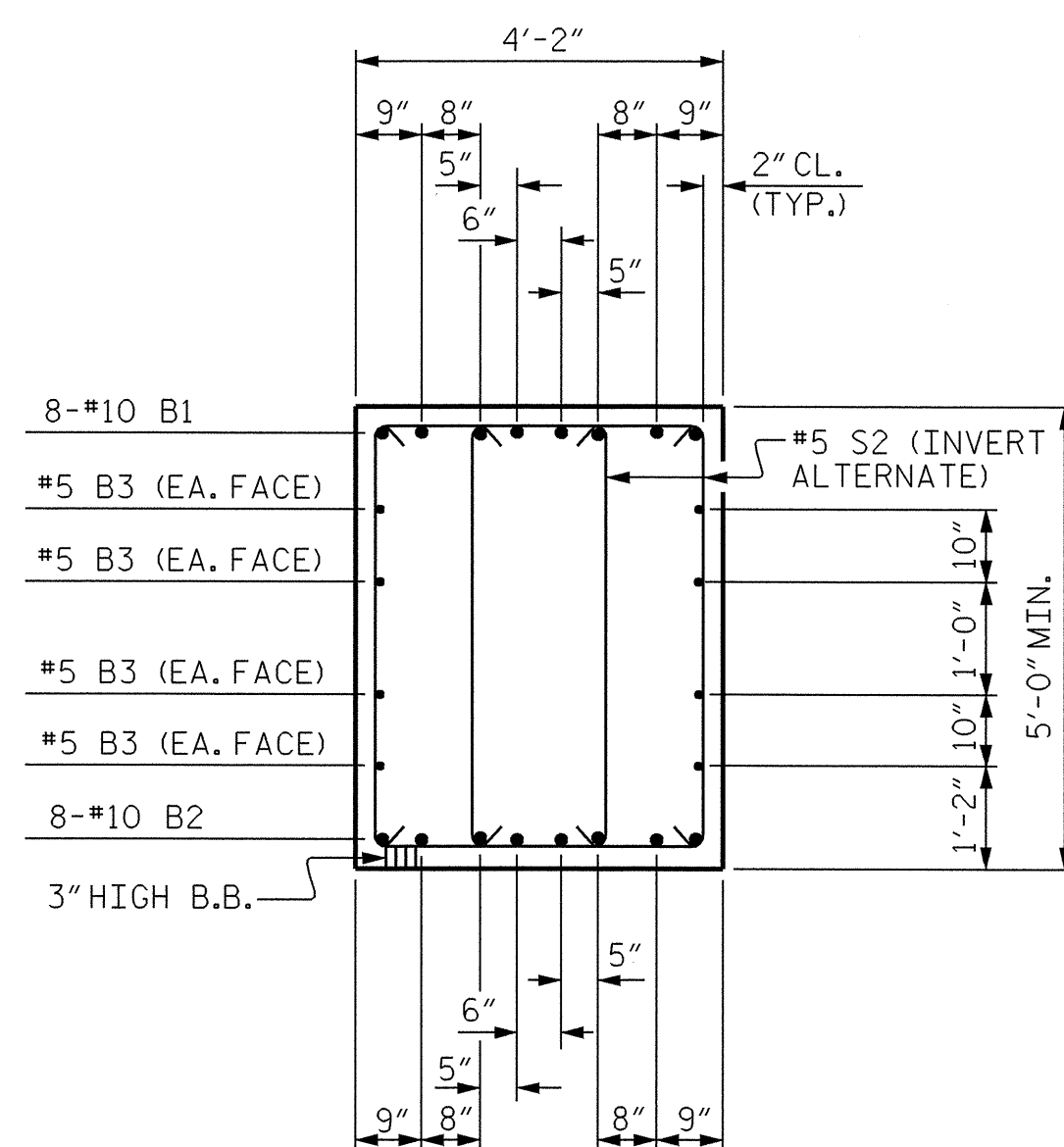
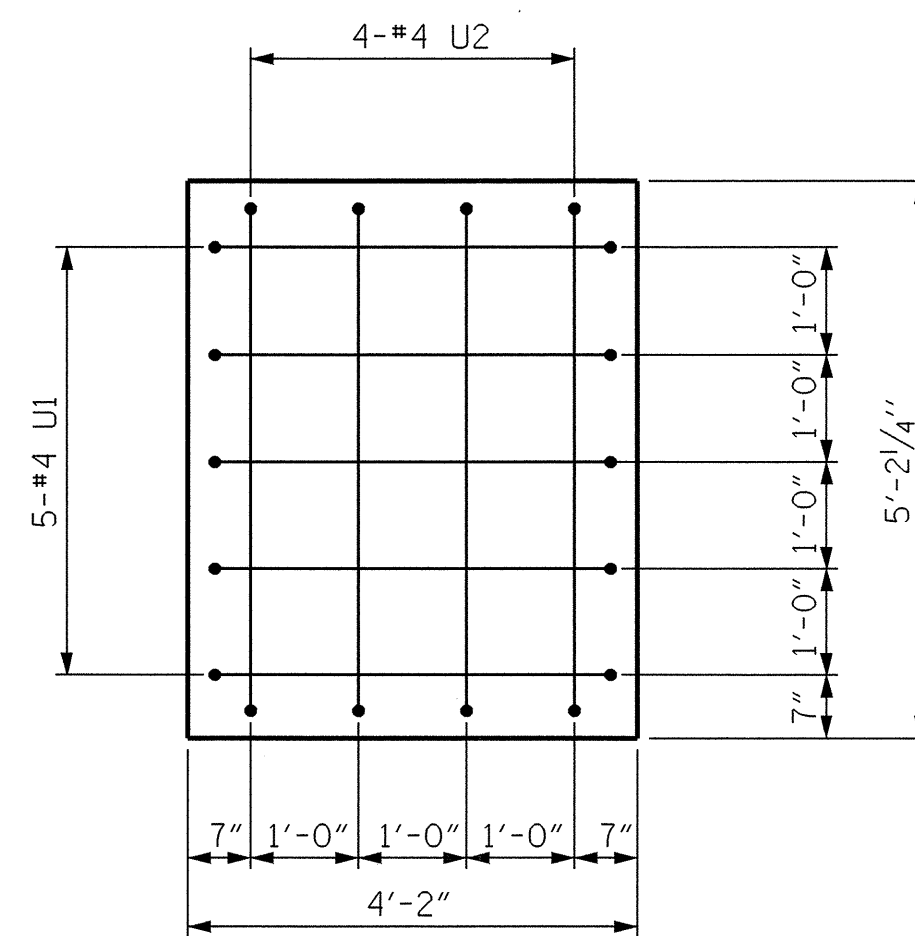


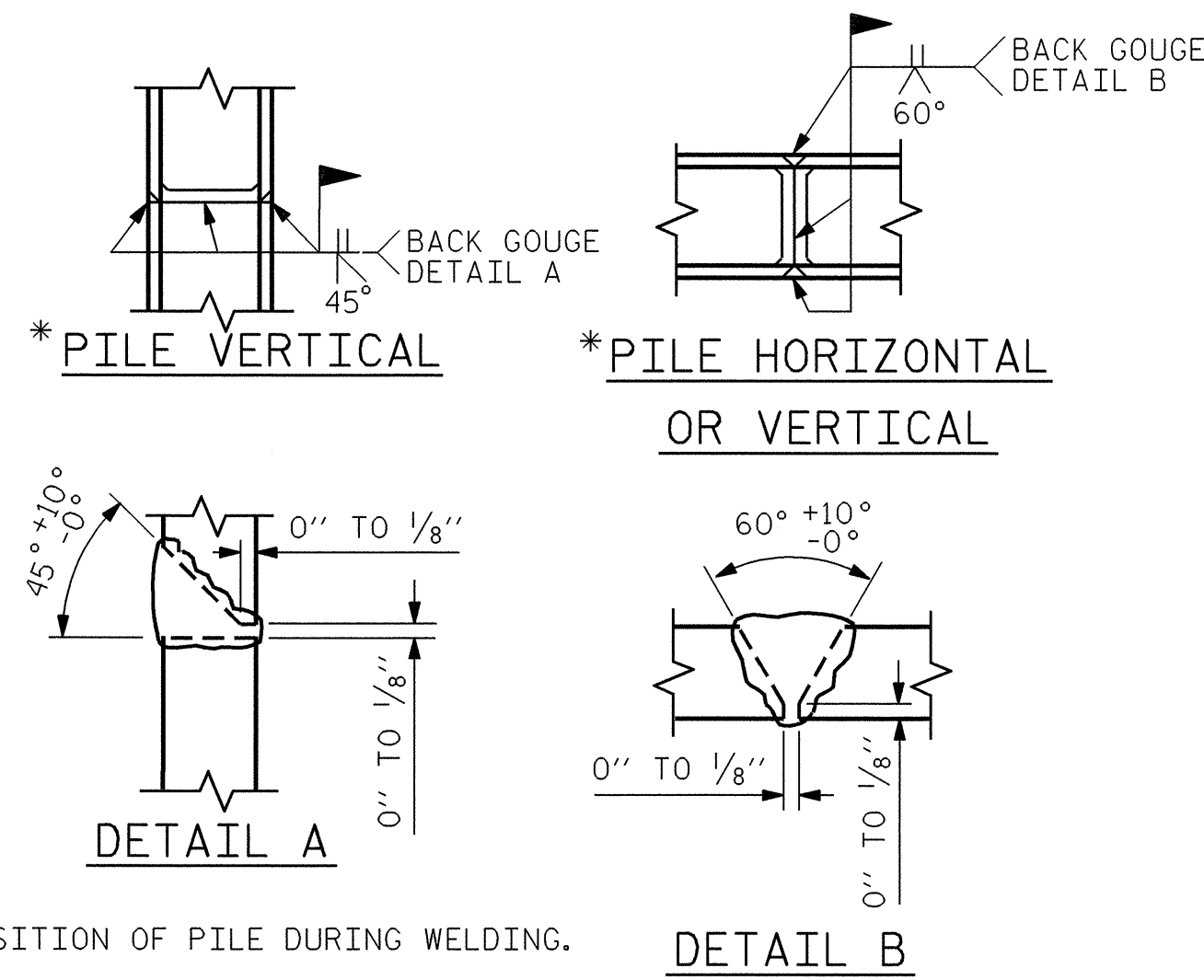
SECTION A-A



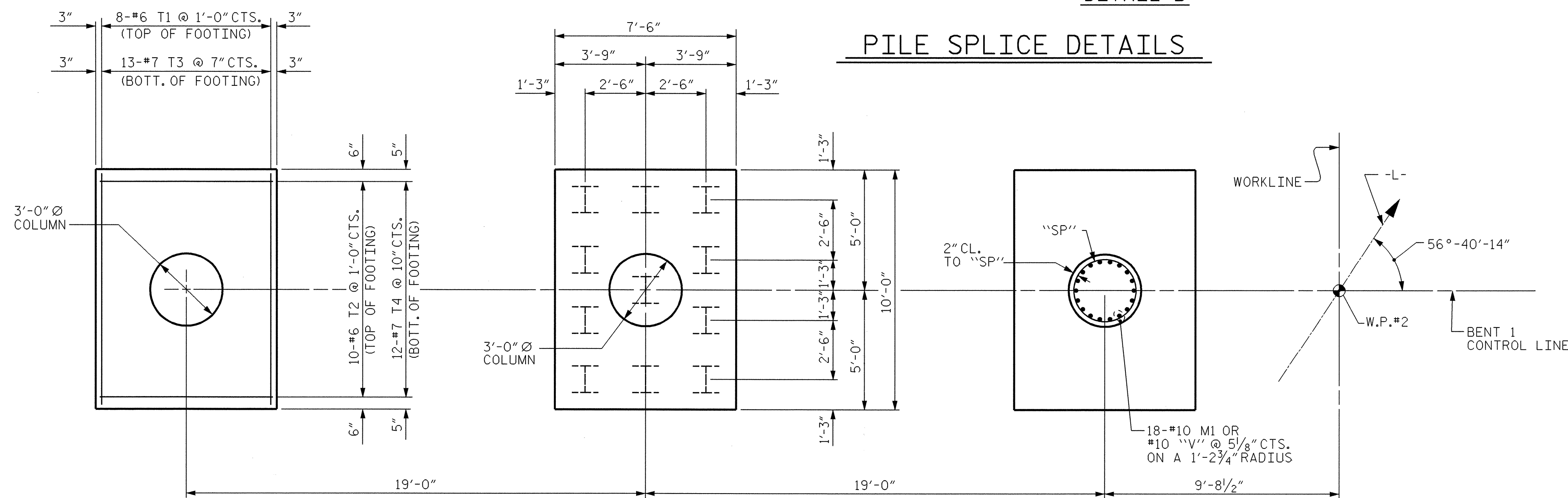
SECTION B-B



VIEW X-X

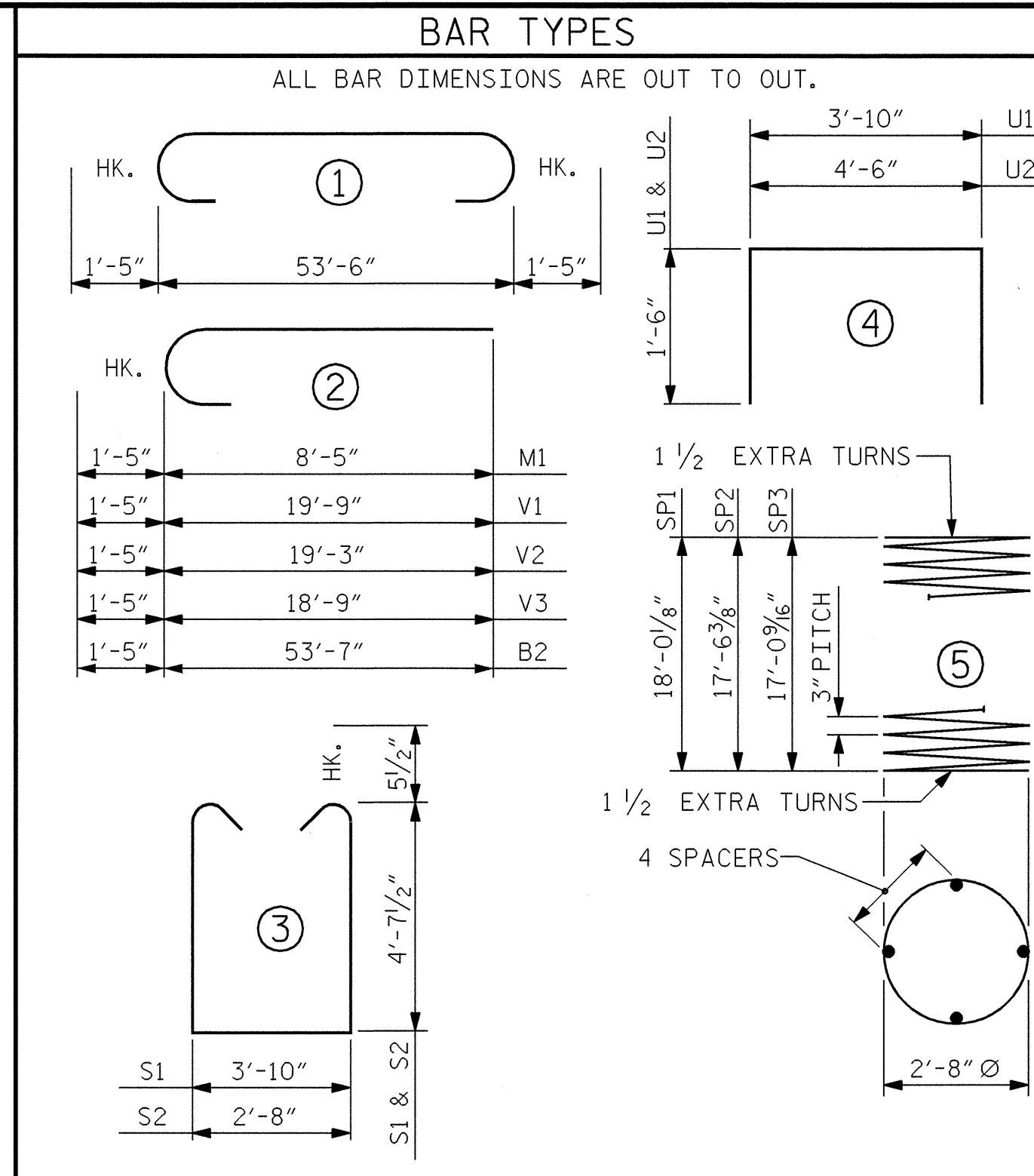


\* POSITION OF PILE DURING WELDING.



PLAN OF FOOTINGS & COLUMNS

REINFORCING STEEL, DIMENSIONS AND DETAILS ARE TYPICAL FOR EACH COLUMN AND FOOTING UNLESS OTHERWISE NOTED.



**NOTES :**  
 STIRRUPS IN CAP MAY BE SHIFTED AS NECESSARY TO CLEAR ANCHOR BOLTS.  
 HOOKS ON "V" BARS MAY BE TURNED AS NECESSARY FOR PLACING REINFORCING STEEL.  
 FOR SPIRAL COLUMN REINFORCING STEEL, SEE SPECIAL PROVISIONS.

BILL OF MATERIAL					
BENT 1 - STAGE I					
BAR	NO.	SIZE	TYPE	LENGTH	WEIGHT
B1	8	#10	1	56'-4"	1939
B2	8	#10	2	55'-0"	1893
B3	8	#5	STR	53'-7"	447
M1	54	#10	2	9'-10"	2285
S1	64	#5	3	14'-0"	935
S2	22	#5	3	12'-10"	294
T1	24	#6	STR	9'-8"	348
T2	30	#6	STR	7'-2"	323
T3	39	#7	STR	9'-8"	771
T4	36	#7	STR	7'-2"	527
U1	35	#4	4	6'-10"	160
U2	4	#4	4	7'-6"	20
V1	18	#10	2	21'-2"	1639
V2	18	#10	2	20'-8"	1601
V3	18	#10	2	20'-2"	1562
REINFORCING STEEL					= 14744 LBS
SP1	1	**	5	618'-7"	413
SP2	1	**	5	602'-10"	403
SP3	1	**	5	586'-10"	392
SPIRAL COLUMN REINFORCING STEEL ("SP")					= 1208 LBS
CLASS A CONCRETE BREAKDOWN :					
POUR #1 (FOOTINGS)					29.2 C.Y.
POUR #2 (COLUMNS)					13.6 C.Y.
POUR #3 (CAP)					40.8 C.Y.
TOTAL CLASS A CONCRETE					83.6 C.Y.
HP 12 X 53 STEEL PILES					
No. 33 LIN. FT. 1,815					

\*\* THE SP1, SP2 & SP3 SPIRAL REINFORCING STEEL SHALL BE W20 OR D-20 COLD DRAWN WIRE OR #4 PLAIN OR DEFORMED BAR.

DRAWN BY : A.R.CHESSON/JPA DATE : 2-04  
 CHECKED BY : A.K.PATEL DATE : 3-23-04

30-JUL-2004 08:40  
 W:\Squad\N2102\Final\N2102.sd.b1.01.dgn  
 Klayne



PROJECT NO. I-2102  
 FORSYTH COUNTY  
 STATION: 20+71.54 -L-  
 SHEET 2 OF 4

STATE OF NORTH CAROLINA  
 DEPARTMENT OF TRANSPORTATION  
 RALEIGH

SUBSTRUCTURE  
 BENT 1  
 STAGE I

REVISIONS					
NO.	BY:	DATE:	NO.	BY:	DATE:
1			3		
2			4		

SHEET NO. S-38  
 TOTAL SHEETS 51