


TWO LANE, TWO WAY WORK ZONE (L-LINES)

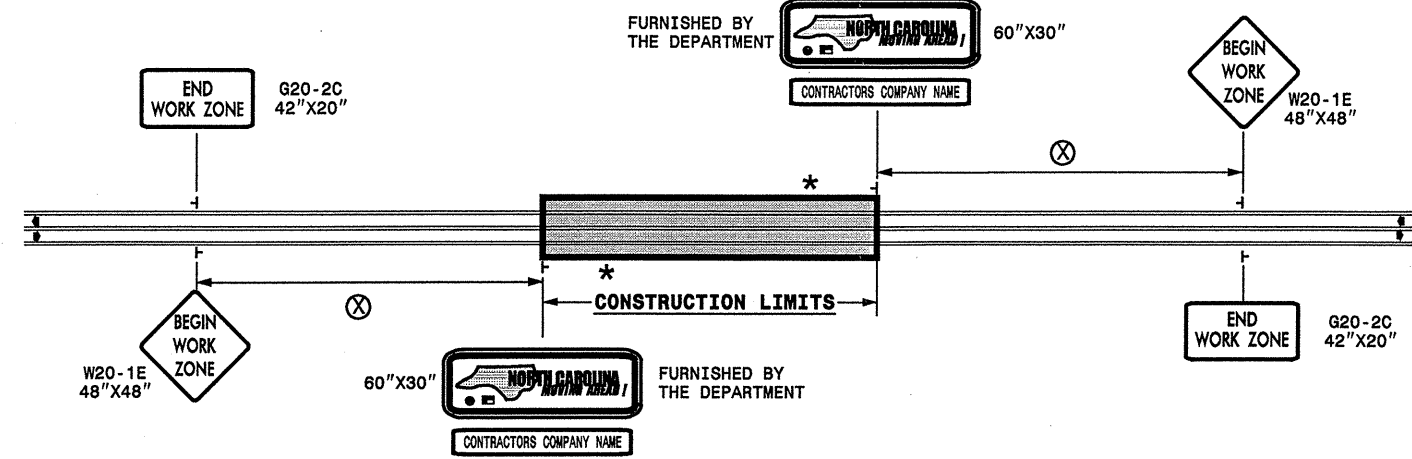
FURNISHED BY THE DEPARTMENT



60"X30"

CONTRACTORS COMPANY NAME

60" Max. X 12"



POSTED SPEED LIMIT (M.P.H.)	RECOMMENDED MINIMUM SIGN SPACING
P.S.L. ≤ 50	350'
P.S.L. ≥ 55	500'

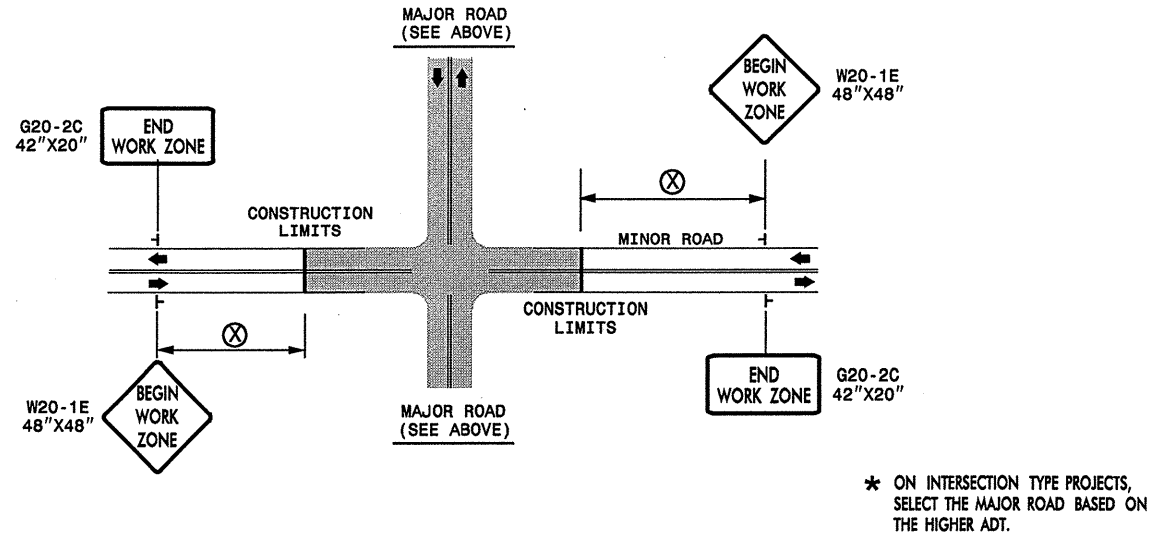
* WORK ZONE NEXT XX MILES G20-1 42"X20"

* THIS SIGN TO BE USED ON PROJECTS LONGER THAN 2 MILES. THE NUMBER DISPLAYED ON THE SIGN IS TO BE A WHOLE NUMBER ROUNDED UP TO THE NEXT MILE. IT'S TO BE LOCATED 1,500 FEET INSIDE OF THE CONSTRUCTION LIMITS.

PROJ. REFERENCE NO. WBS37484 SHEET NO. NCMA-1

STATE OF NORTH CAROLINA
DEPT. OF TRANSPORTATION
DIVISION OF HIGHWAYS
RALEIGH, N.C.

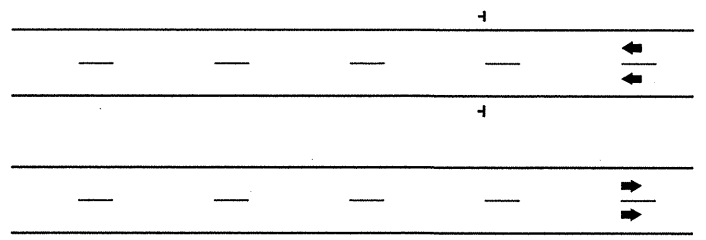
INTERSECTIONS (-Y- LINES)



FREEWAYS/INTERSTATES

DUAL MOUNT "BEGIN WORK ZONE" SIGNS 1,000' IN ADVANCE OF PROJECT LIMITS

DUAL MOUNT "MOVING AHEAD" SIGNS 500' IN ADVANCE OF PROJECT LIMITS



DETAIL DRAWING FOR ADVANCE WARNING WORK ZONE SIGNS

SHEET 1 OF 1

GENERAL NOTES

SEE SPECIAL PROVISIONS FOR "NORTH CAROLINA MOVING AHEAD" REQUIREMENTS.

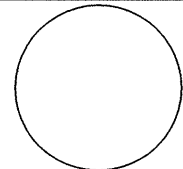
LEGEND

┆ STATIONARY SIGN

◄ DIRECTION OF TRAFFIC FLOW


APPROVED: _____ DATE: _____

SEAL



ADVANCE WARNING WORK ZONE SIGNS FOR "MOVING AHEAD"

SCALE: NONE
DATE: 07/03
DWG. BY: JSK
DESIGN BY: JSK
REVIEWED BY: SK



REVISIONS