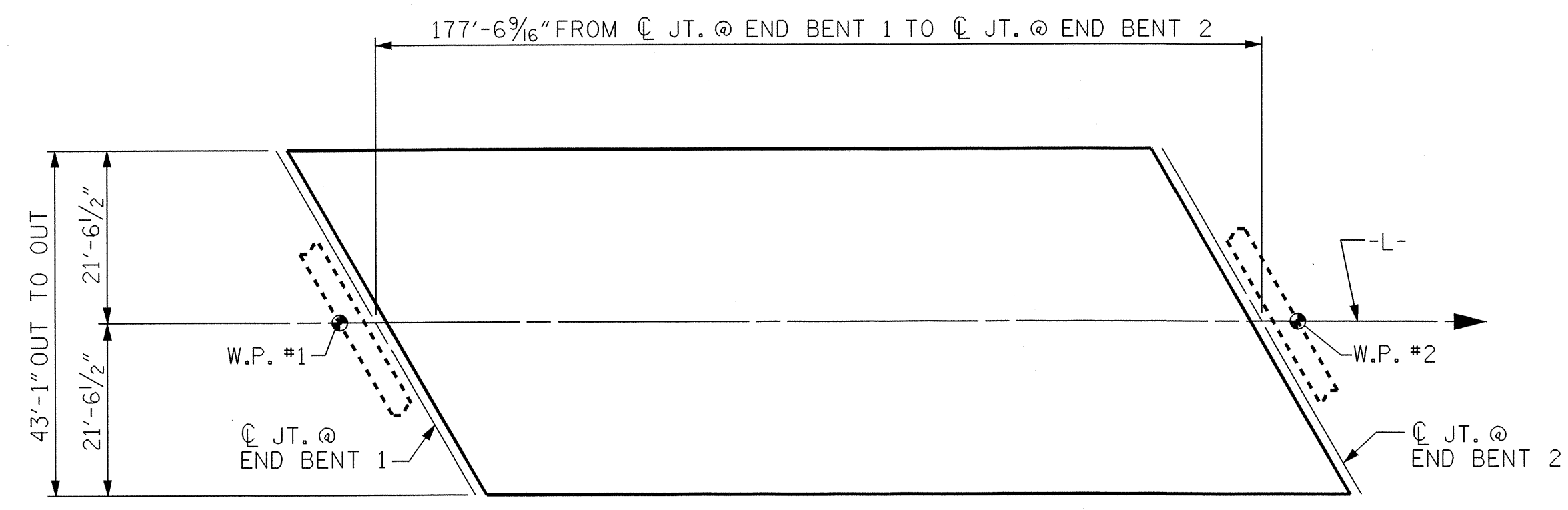
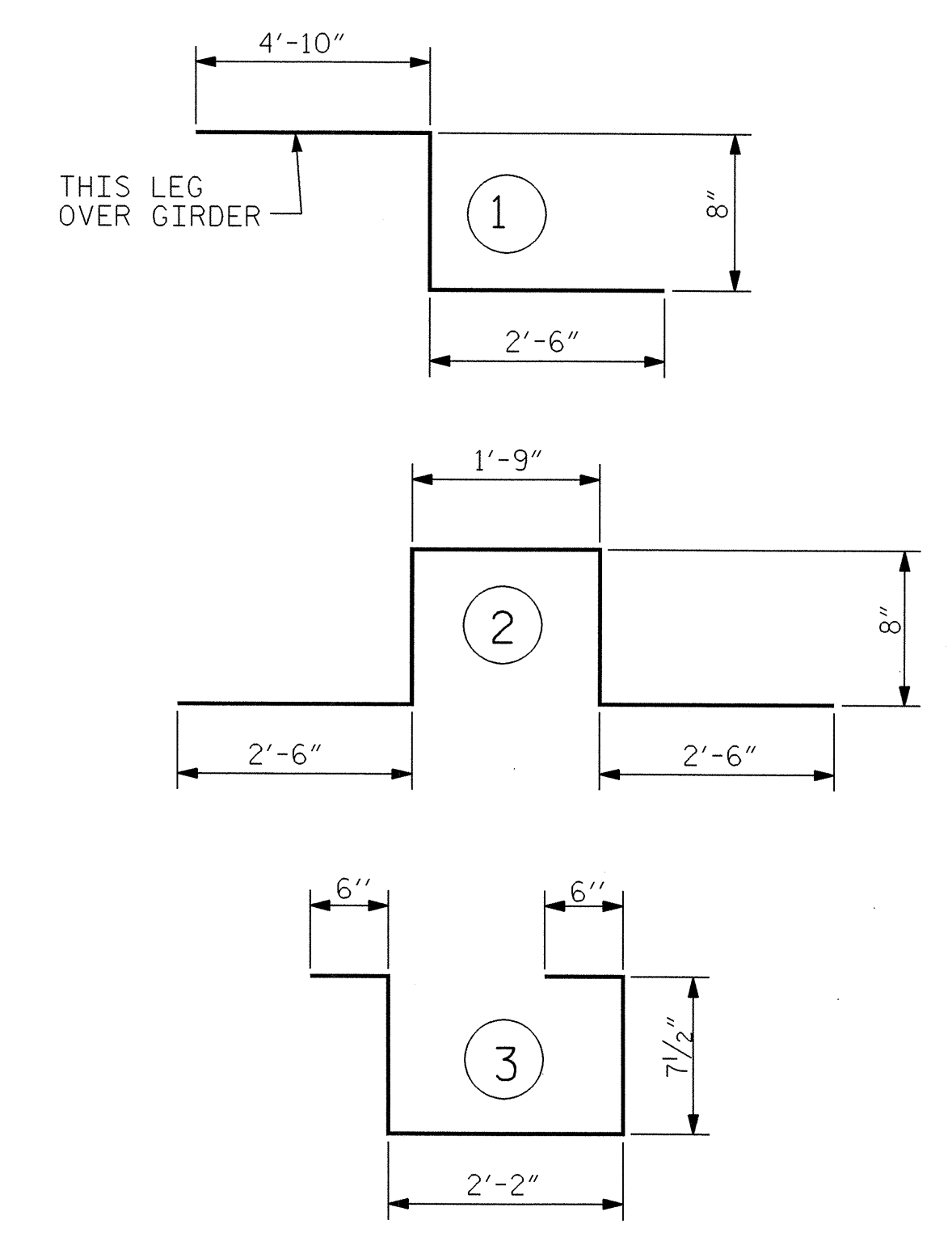


BILL OF MATERIAL

SPAN A

BAR	NO.	SIZE	TYPE	LENGTH	WEIGHT	BAR	NO.	SIZE	TYPE	LENGTH	WEIGHT
* A1	282	#5	STR	42'- 9"	12574	A206	4	#5	STR	31'- 6"	131
A2	282	#5	STR	42'- 9"	12574	A207	4	#5	STR	29'- 8"	124
						A208	4	#5	STR	27'- 9"	116
* A101	4	#5	STR	40'-11"	171	A209	4	#5	STR	25'-11"	108
* A102	4	#5	STR	39'- 1"	163	A210	4	#5	STR	24'- 0"	100
* A103	4	#5	STR	37'- 2"	155	A211	4	#5	STR	22'- 2"	92
* A104	4	#5	STR	35'- 4"	147	A212	4	#5	STR	20'- 3"	84
* A105	4	#5	STR	33'- 5"	139	A213	4	#5	STR	18'- 5"	77
* A106	4	#5	STR	31'- 6"	131	A214	4	#5	STR	16'- 6"	69
* A107	4	#5	STR	29'- 8"	124	A215	4	#5	STR	14'- 8"	61
* A108	4	#5	STR	27'- 9"	116	A216	4	#5	STR	12'- 9"	53
* A109	4	#5	STR	25'-11"	108	A217	4	#5	STR	10'-11"	46
* A110	4	#5	STR	24'- 0"	100	A218	4	#5	STR	9'- 0"	38
* A111	4	#5	STR	22'- 2"	92	A219	4	#5	STR	7'- 2"	30
* A112	4	#5	STR	20'- 3"	84	A220	4	#5	STR	5'- 3"	22
* A113	4	#5	STR	18'- 5"	77	A221	4	#5	STR	3'- 5"	14
* A114	4	#5	STR	16'- 6"	69						
* A115	4	#5	STR	14'- 8"	61	* B1	210	#4	STR	27'- 1"	3799
* A116	4	#5	STR	12'- 9"	53	B2	208	#5	STR	46'- 0"	9979
* A117	4	#5	STR	10'-11"	46						
* A118	4	#5	STR	9'- 0"	38	* G1	2	#5	STR	49'- 4"	103
* A119	4	#5	STR	7'- 2"	30						
* A120	4	#5	STR	5'- 3"	22	* K1	12	#5	1	8'- 0"	100
* A121	4	#5	STR	3'- 5"	14	* K2	18	#5	2	8'- 1"	152
						* K3	24	#5	STR	9'- 11"	248
A201	4	#5	STR	40'-11"	171						
A202	4	#5	STR	39'- 1"	163	* S1	56	#4	3	4'- 5"	165
A203	4	#5	STR	37'- 2"	155						
A204	4	#5	STR	35'- 4"	147						
A205	4	#5	STR	33'- 5"	139						
REINFORCING STEEL					=	24493 LBS					
EPOXY COATED REINF. STEEL					=	19081 LBS					

BAR TYPES



LAYOUT FOR COMPUTING AREA  
OF REINFORCED CONCRETE DECK SLAB  
(SQ. FT. = 7,649)

SUPERSTRUCTURE REINFORCING STEEL  
LENGTHS ARE BASED ON THE  
FOLLOWING MINIMUM SPLICE LENGTHS

BAR SIZE	SUPERSTRUCTURE EXCEPT APPROACH SLABS, PARAPET, AND BARRIER RAIL		APPROACH SLABS		PARAPET AND BARRIER RAIL
	EPOXY COATED	UNCOATED	EPOXY COATED	UNCOATED	
#4	2'-0"	1'-9"	2'-0"	1'-9"	2'-9"
#5	2'-6"	2'-2"	2'-6"	2'-2"	3'-5"
#6	3'-0"	2'-7"	3'-10"	2'-7"	4'-4"
#7	5'-3"	3'-6"	—	—	—
#8	6'-10"	4'-7"	—	—	—

GROOVING BRIDGE FLOORS	
BRIDGE DECK	6,536 SQ.FT.
APPROACH SLABS	1,886 SQ.FT.
<b>TOTAL</b>	<b>8,422 SQ.FT.</b>

ALL BAR DIMENSIONS ARE OUT TO OUT

— SUPERSTRUCTURE BILL OF MATERIAL —			
	CLASS AA CONCRETE	REINFORCING STEEL	EPOXY COATED REINFORCING STEEL
	( CU.YDS.)	( LBS.)	( LBS.)
SPAN A	244.92	24,493	19,081
<b>TOTALS**</b>	<b>244.92</b>	<b>24,493</b>	<b>19,081</b>

QUANTITIES FOR BARRIER RAIL ARE NOT INCLUDED

PROJECT NO. B-3419  
BURKE COUNTY  
STATION: 20+15.00 -L-



*Stephen Douglas Rankin*  
5/26/04

STATE OF NORTH CAROLINA  
DEPARTMENT OF TRANSPORTATION  
RALEIGH

STANDARD  
SUPERSTRUCTURE  
BILL OF MATERIAL

OCTOBER 1987

REVISIONS						SHEET NO. S-12
NO.	BY:	DATE:	NO.	BY:	DATE:	
1			3			TOTAL SHEETS 23
2			4			

ASSEMBLED BY : A.R.CHESSON DATE: 8-03	
CHECKED BY : S.H.SOCKWELL DATE: 1-04	
DRAWN BY : JMB 5/87	REV. 6/1/94 EEM/GRP
CHECKED BY : SJD 9/87	