

STATE	PROJECT NO.	SHEET NO.	TOTAL SHEETS
N.C.	37425	16	22

STATE OF NORTH CAROLINA
DEPT. OF TRANSPORTATION
DIVISION OF HIGHWAYS
RALEIGH, N.C.

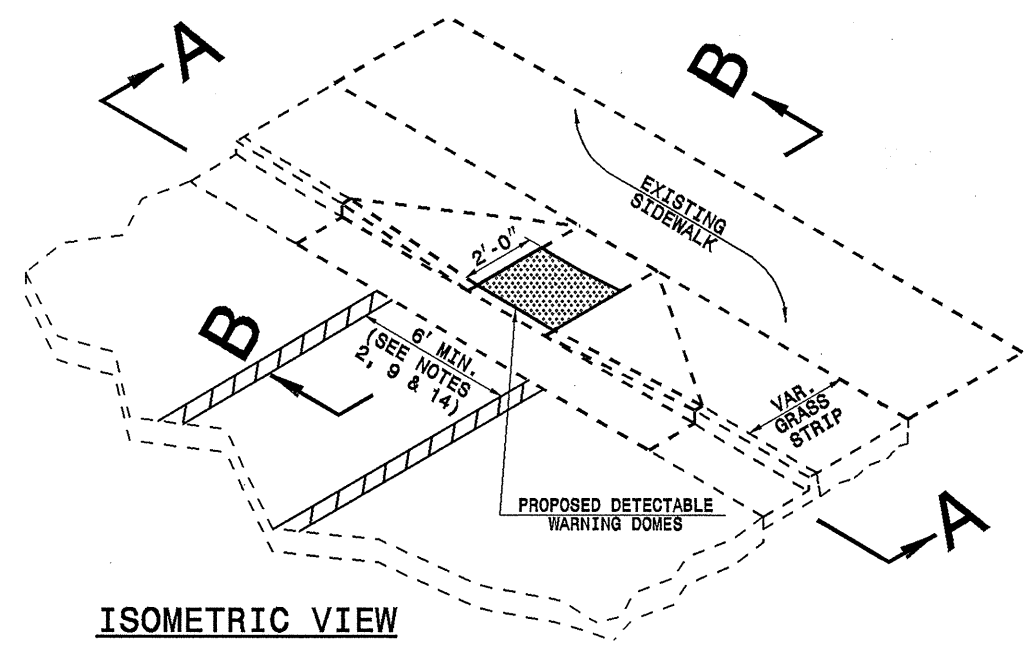
ENGLISH DETAIL DRAWING FOR
RETROFITTING DETECTABLE WARNING DOMES
ONTO EXISTING WHEELCHAIR RAMP
CURB CUT

SHEET 3 OF 5
848D06

STATE OF NORTH CAROLINA
DEPT. OF TRANSPORTATION
DIVISION OF HIGHWAYS
RALEIGH, N.C.

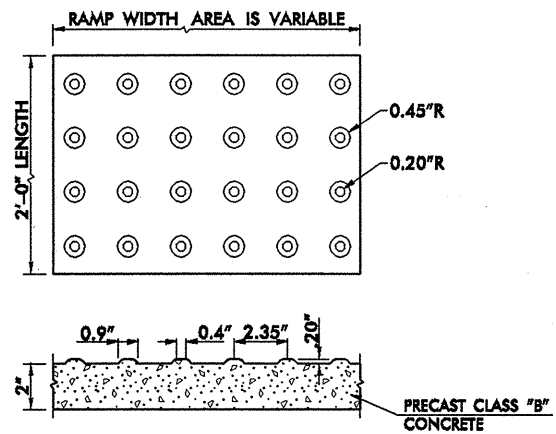
ENGLISH DETAIL DRAWING FOR
RETROFITTING DETECTABLE WARNING DOMES
ONTO EXISTING WHEELCHAIR RAMP
CURB CUT

SHEET 3 OF 5
848D06

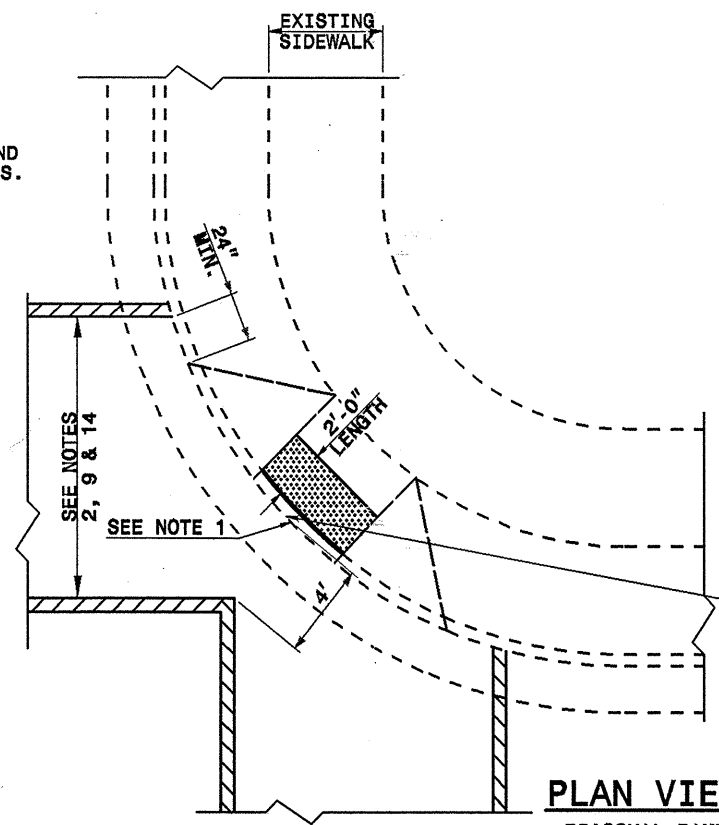


ISOMETRIC VIEW

1. DETECTABLE WARNING DOMES SHALL COVER 2'-0" LENGTH AND FULL WIDTH OF THE RAMP FLOOR AS SHOWN ON THE DETAILS.
2. THE RAMP MAY BE YELLOW IN COLOR OR ANY COLOR WITH A 70% CONTRAST RATIO.

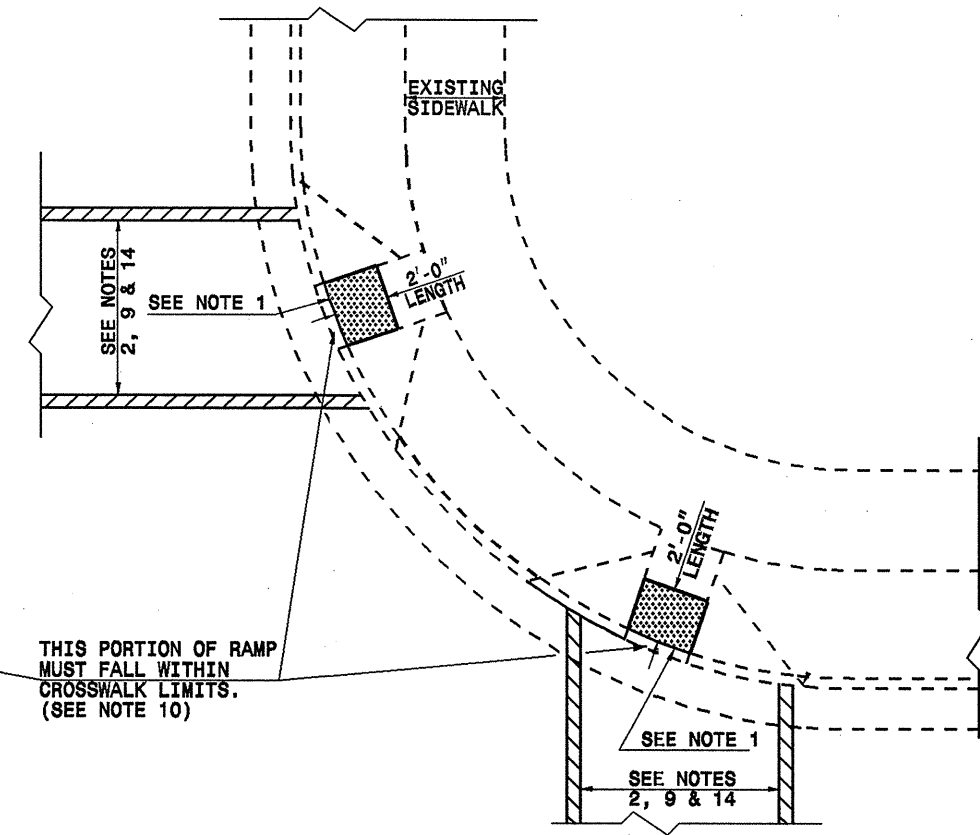


DETECTABLE WARNING DOMES



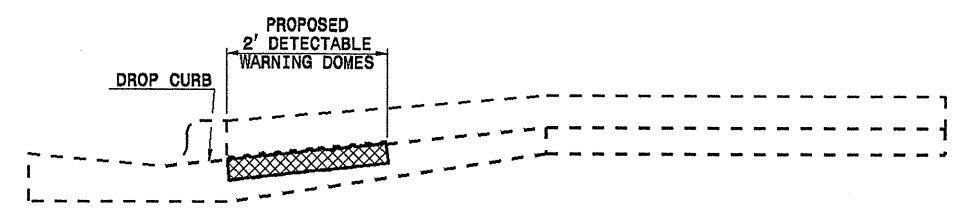
PLAN VIEW

DIAGONAL RAMP
MAX. 25' RADII
(60" MIN. FLOOR WIDTH)

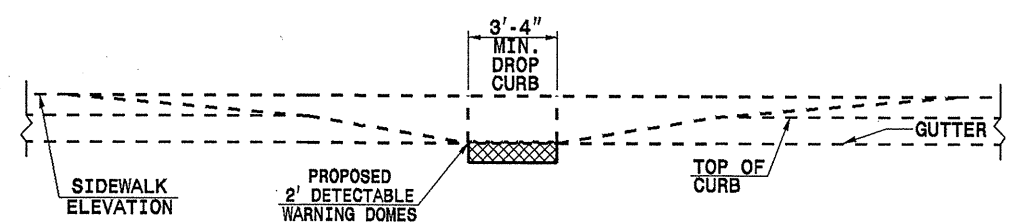


PLAN VIEW

DUAL RAMP
ANY RADII
(40" MIN. FLOOR WIDTH)



SECTION B-B



SECTION A-A

30-AUG-2004 14:37 Moving Ahead\37425\WheelChair-2.dgn
Project\Div\37425\37425.dwg
5/28/09